

Effisus Stopper MR Retrofit

Confirming pipe diameter and cutting Effisus Stopper MR



1

Confirm the pipe diameter.

Cut the cone of the Effisus Stopper MR at the indicated position corresponding to the relevant pipe size.

Flashing down over pipe

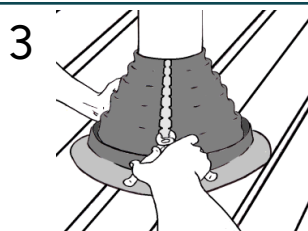


2

With the clip in the downstream position, wrap the top of the cone around the pipe.

Engage the metal teeth into the opposing pockets, starting from the top.

Positioning and marking a guideline

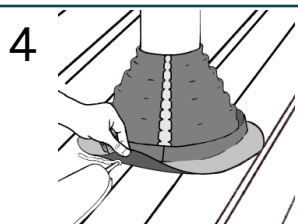


3

To assist in locating the clip into the pocket, place a hand behind the Effisus Stopper MR seam.

Fasten the clip with pliers, or an equivalent tool, from top to base.

Applying the adhesive



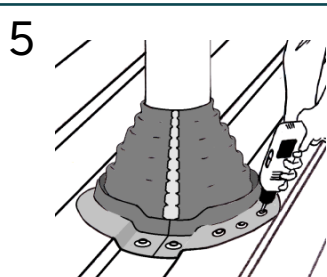
4

Using your hands, apply pressure to the base of the Effisus Stopper MR so that it conforms to the contours of the roof panel, adjusting it to the roof corrugation.

Slightly lift the Effisus Stopper MR.

Apply a continuous bead of Effisus Bonding KF+P Adhesive to the underside of the Effisus Stopper MR base, as indicated in the figure.

Mechanically fastening



5

Press the Effisus Stopper MR into the roof, adjusting it to the roof corrugation with your hands.

Begin fastening the Effisus Stopper MR to the roof with one screw on opposite sides of the clipped seam.

Continue fastening the Effisus Stopper MR to the roof, ensuring that the maximum spacing between screws does not exceed 40 mm and that the fastening follows precisely the contours of the roof panel.

Apply a bead of Effisus Bonding KF+P Adhesive around the perimeter of the installed Effisus Stopper MR, both at the bottom and at the top.