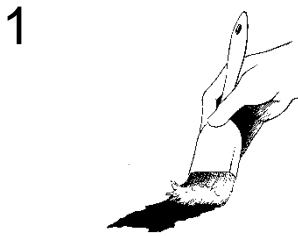


INSTALLATION INSTRUCTIONS - EFFISUS ECOFACADE SA-EDGE MEMBRANE

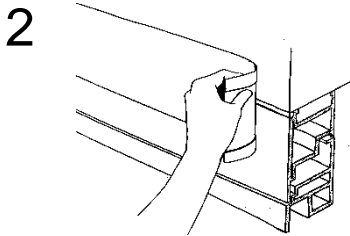
Substrate Preparation



1

All substrates should be dry. Please clean all non-absorptive, smooth substrates using the Effisus Setup PR Cleaner. Remove any loose material from absorptive, porous substrates, such as concrete, and subcoat these substrates with the Effisus Coat NP Primer. Allow the primer to flash off. Bonding operations can not be carried out at temperatures below -10°C . For temperatures between 5°C and -10°C always subcoat the substrates with Effisus Coat NP Primer.

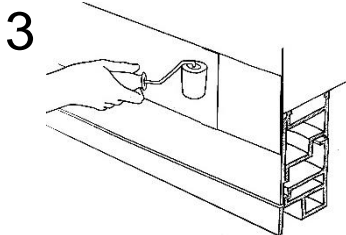
Connecting Operations



2

Remove the protective foil of the self-adhesive edge of the Effisus Ecofacade SA-Edge Membrane and progressively adhere the membrane to the substrate. Use the steel roll to apply pressure and get a good bonding. The side of the membrane without self-adhesive edge must be glued to the substrate using the Effisus Bonding KF / KF+P Adhesive. Minimum bonding width for any substrate: 40mm.

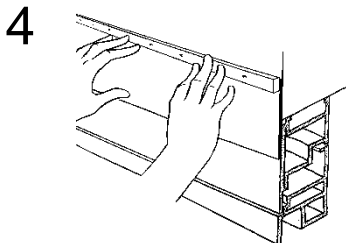
Overlaps



3

Seams between Effisus Ecofacade Sa-Edge Membranes should have a minimum overlap of 80mm. Apply 2 beads with 8mm diameter of the Effisus Bonding KF / KF+P Adhesive on top of bottom Effisus Ecofacade SA-Edge Membrane, connect both membranes and press on using a steel roller (until the adhesive has spread into a 1mm thick layer).

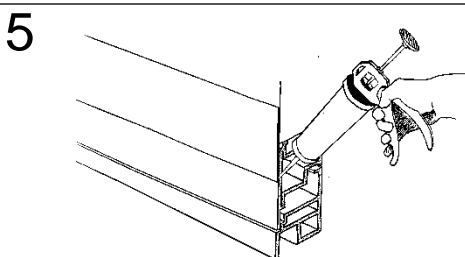
Mechanical Fastening



4

If the bonding width is under 40mm mechanical fastening is required. Mechanical fastening should be done using an aluminium termination bar screwed at 250mm oc maximum.

Details



5

Effisus Ecofacade SA-Edge Membrane perimeter, inner and outer corners, and other details, can be sealed with the Effisus Bonding KF+P Adhesive.